



COLORSYS

FOGRA PSD



Digital Information Ltd.



- Color management
- Color consulting
- Procesna kontrola štampe
- Fogra certifikacija
- Remote proofing
- Hard proofing
- Workflow software
- Print MIS software
- Industrijski spektrofotometri
- Spektrofotometri za grafičku industriju
- CTP uređaji
- Industrijski printeri
- Profesionalni monitori
- Proof papiri
- Foto papiri
- Svetlosne kabine

Partner



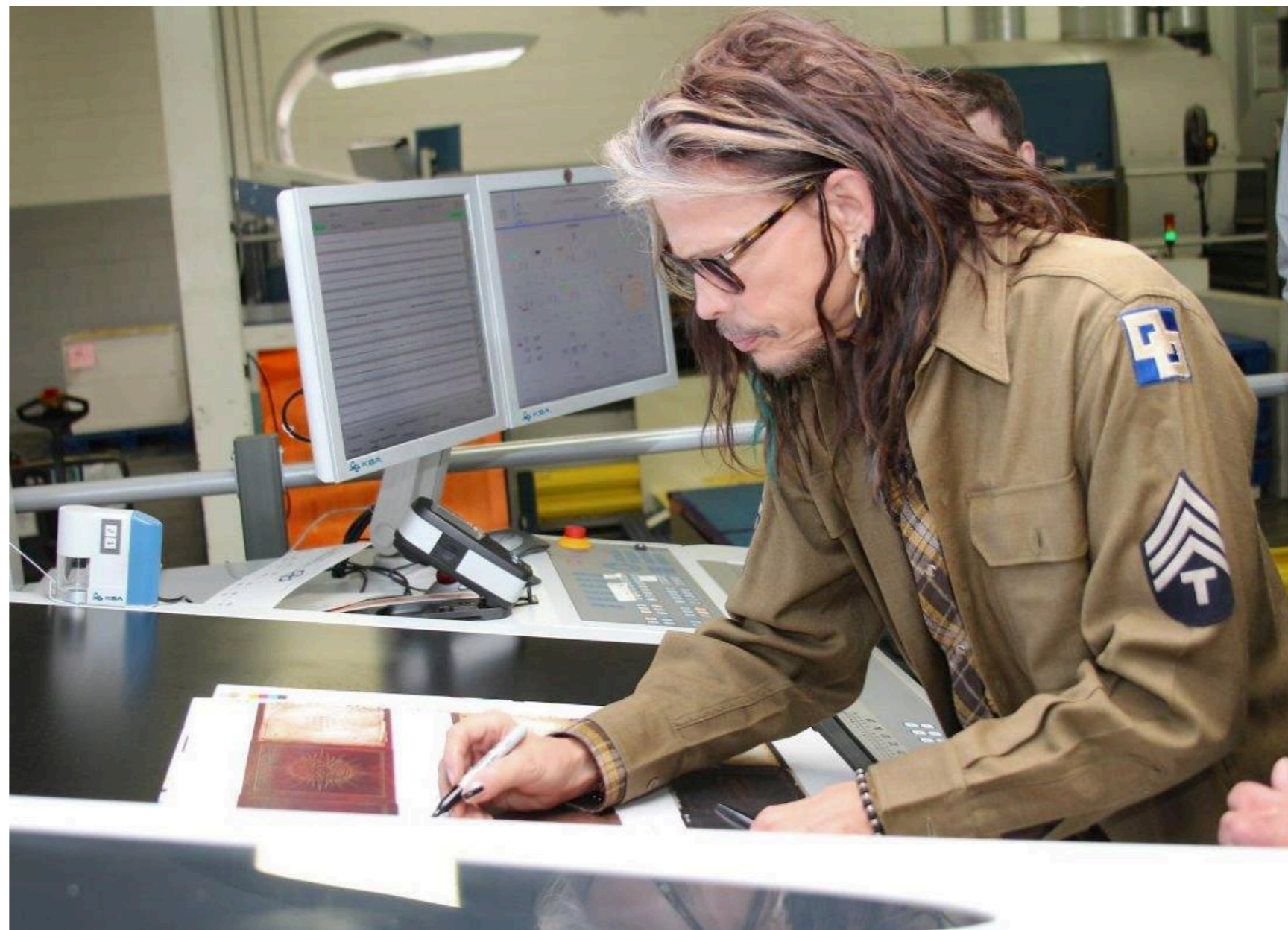
PSD

veza između klijenta i štampa

Print FEST 2017 - Dani s gospodinom Printom 4/19



COLORSYS



Klijent overava štampu

Print FEST 2017 - Dani s gospodinom Printom 5/19



COLORSYS



Klijent overava štampu





An Initiative of IDEAlliance

SWOP[®]

Specifications
Web Offset
Publications



Standard



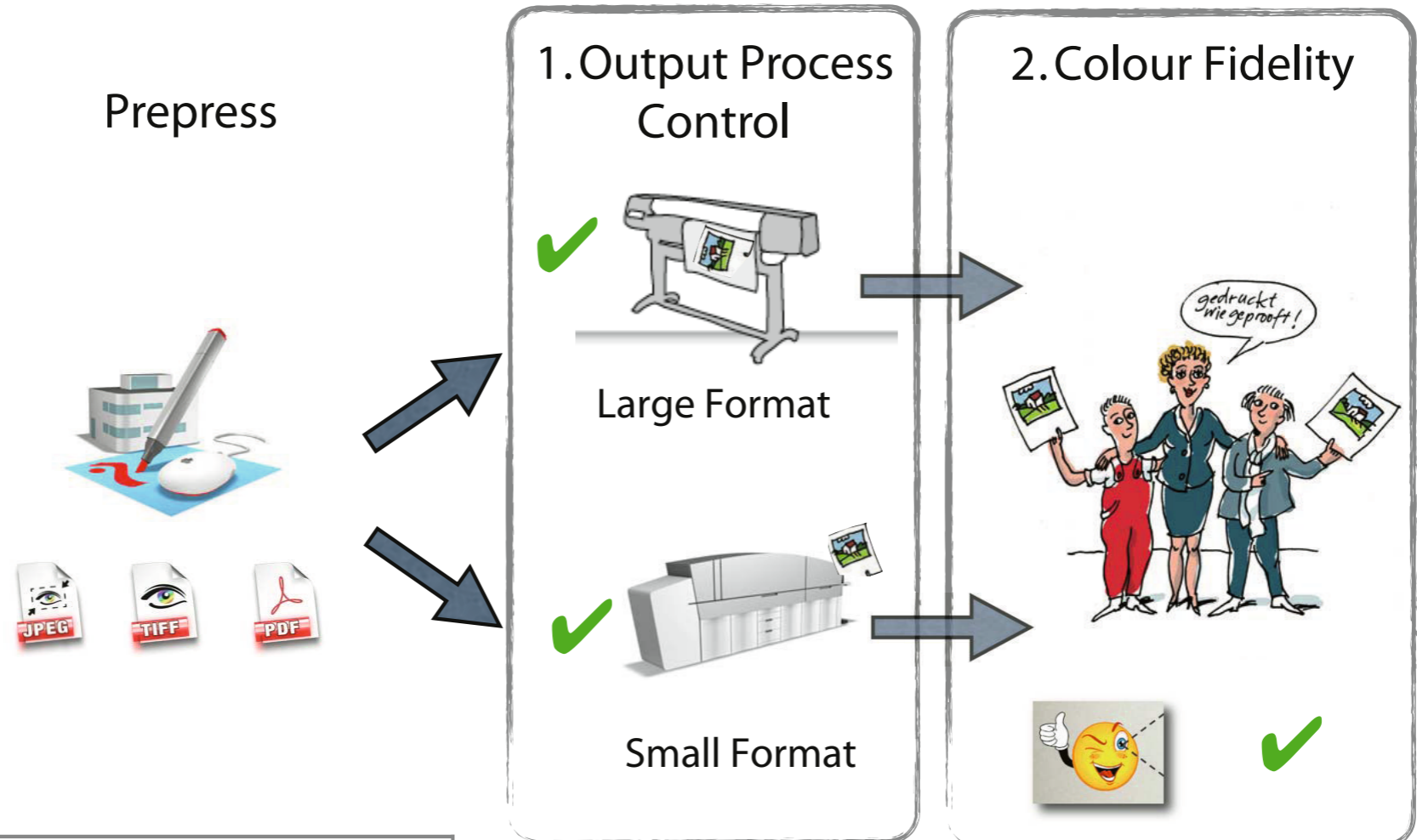


ISO-15311



Standard





<h3>3. Workflow</h3>	<p>⇒ Stability</p> <ul style="list-style-type: none"> ✓ Data Preflight ✓ PDF/X Creation 	<p>⇒ Printing the Expected</p> <ul style="list-style-type: none"> ✓ PDF/X Output ✓ Altona Test Suite V1 & V2 	<ul style="list-style-type: none"> ✓ ICC Handling ✓ Light Audit
----------------------	---	--	---

Fogra PSD concept. Aiming for a consistent and predicable print quality, the three aspects output process control, colour fidelity and workflow need to be evaluated.

Standard





Zadatak

Odgovornost

Napomena

Kreiranje podataka

Štampar obaveštava o statusu

Hard ili softproof

Print ready
PDF/X

Klijent

Preflight

Štampar

Dogovor o uslovima
štampe

Štampar-Klijent

Kvalitet štampe, posebne
boje, predviđena
udaljenost gledanja

Mogućnost štampe

Štampar

osim slučaja serifikovanog
materijala

Konverzija

Štampar

Štampar je dužan da
upozori kupca o limitima.

Odgovornost

Print FEST 2017 - Dani s gospodinom Printom 10/19



COLORSYS



Klijent dostavlja

- Otvorene fajlove
- PDF-dokument
- PDF/X-1
- PDF/X-4



Prepress





Provera

- RGB/CMYK/INDEX
- Rezolucija
- Overprint White
- Transparencija
- Separacija/Količina boje
- Izveštaj



Prepress





Provera

- Validation print
- Proof



Small Format

Prepress





Table 3 – Deviation tolerances bands for "Absolute" reproductions

Patch in digital printing form	Level C	Level B	Level A
Practical colour quality assessment – print and process check evaluation:			
Patch e) of 5.2 for substrate	$\Delta E_{00}^* \leq 3.0$	$\Delta E_{00}^* \leq 3.0$	$\Delta E_{00}^* \leq 3.0$
All other patches of 5.2 CC95%, CSAve	95 % percentile $\Delta E_{00}^* \leq 8.5$ Average $\Delta E_{00}^* \leq 6.5$	95 % percentile $\Delta E_{00}^* \leq 6.5$ Average $\Delta E_{00}^* \leq 4.5$	95 % percentile $\Delta E_{00}^* \leq 4.5$ Average $\Delta E_{00}^* \leq 2.5$
Patches c) of 5.2 CSMaxNeutral	Max $\Delta C_h \leq 4.5^b$	Max $\Delta C_h \leq 3.5^b$	Max $\Delta C_h \leq 2.5^b$
Extended scrutiny – process check only			
All patches of ISO 12642-2 CCAve, CC95%	Average $\Delta E_{00}^* \leq 6.5$ 95 % percentile $\Delta E_{00}^* \leq 8.5$	Average $\Delta E_{00}^* \leq 4.5$ 95 % percentile $\Delta E_{00}^* \leq 6.5$	Average $\Delta E_{00}^* \leq 2.5$ 95 % percentile $\Delta E_{00}^* < 4.5$
^a Due to the sign character of ΔH the absolute values ought to be used before averaging			



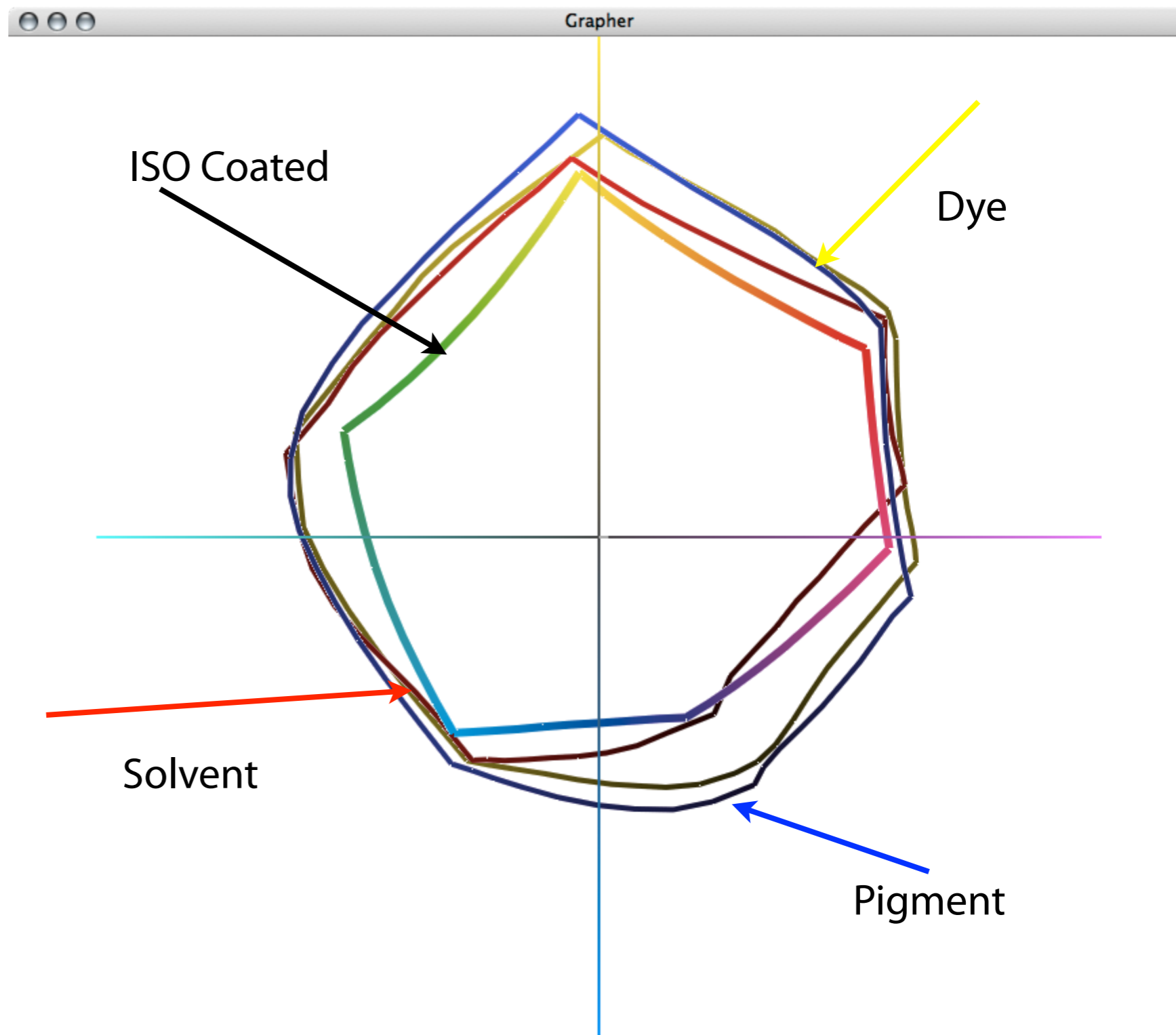
1. Output Process Control



Large Format

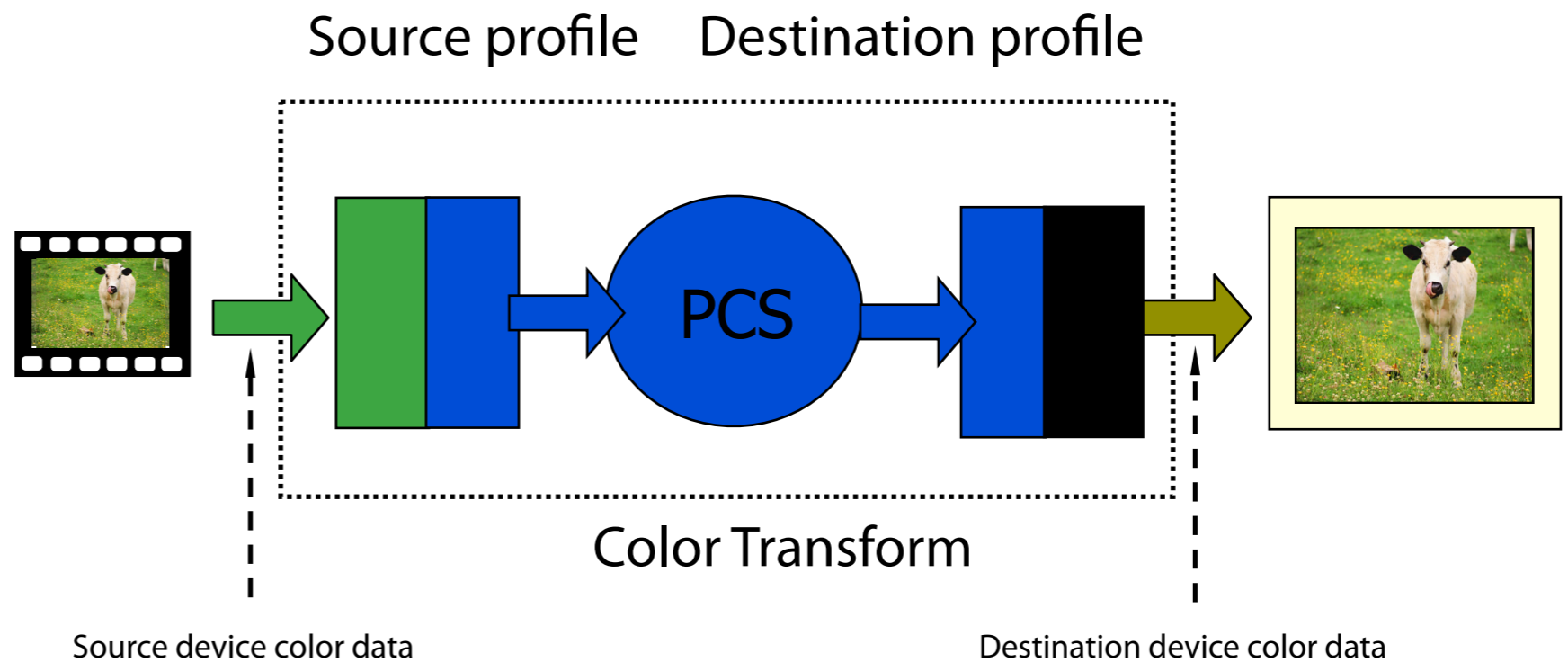
Štampa





Kolorni prostor



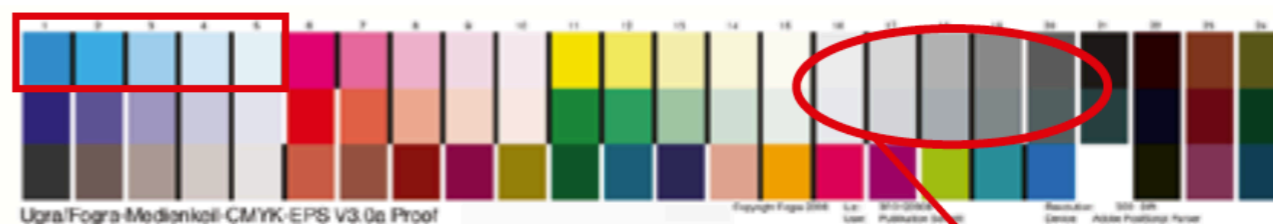


Upravljanje bojom

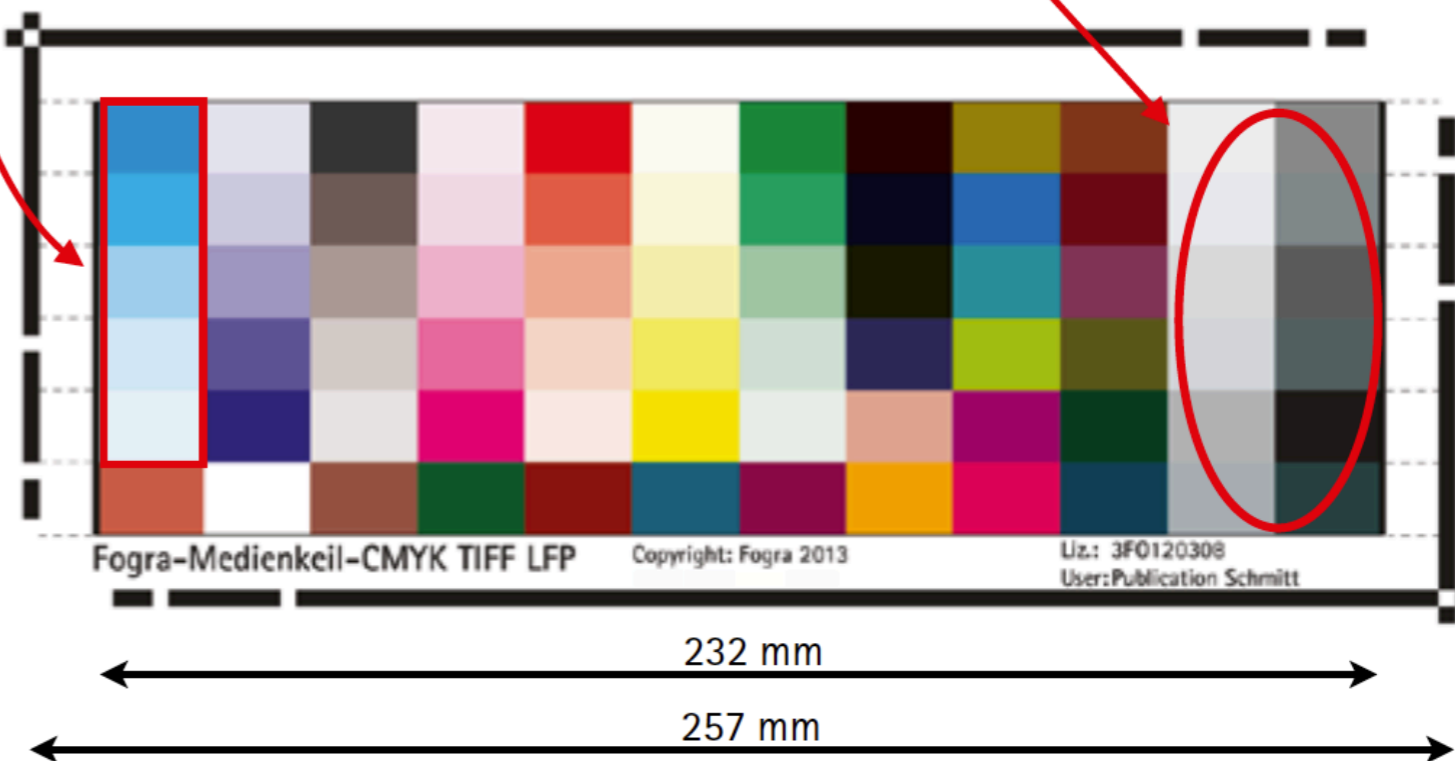
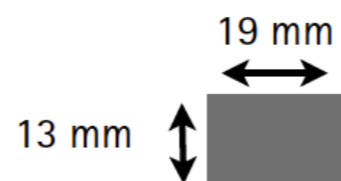




Standard
Layout - V3.0a



LFP
Layout



Kontrola





Svetlo



Hvala!